

The 33rd Korea TESOL International Conference



Schedule
Booklet

Innovation

Criticality

Compassion



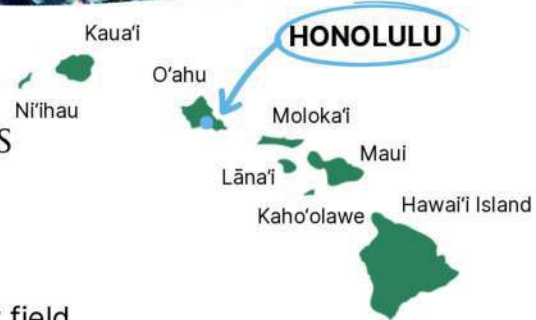
Rethinking Language Education in Times of Change

Sookmyung Women's University
Seoul, South Korea

May 16 & 17, 2026



UNIVERSITY of HAWAII at MĀNOA
KE KE'ENA A'O 'ŌLELO HOU
 DEPARTMENT of SECOND LANGUAGE STUDIES



Join our SLS 'Ohana!

Second Language Studies (SLS) is an interdisciplinary field that addresses the learning, teaching, and use of second (or multiple) languages from educational, linguistic, psychological, sociological, and anthropological perspectives. UH Mānoa's unique multicultural and multilingual context engages students in teaching and researching **ESL, EFL, TESOL, and other second/foreign languages.**

Accreditation
 Western Association of
 Schools and Colleges
 (WASC)

Top 2%
 UH Mānoa is ranked among
 the top 2% of nearly 24,000
 universities in the world!

Why SLS at UH Mānoa?



Bridge to prestigious PhD programs

Our research-driven MA prepares students for PhD study. Graduates have entered leading PhD programs worldwide: UH Mānoa, Harvard, Stanford, Carnegie Mellon, UPenn, Georgetown, Seoul National University, and Yonsei University.



World-Class Faculty

5 SLS professors are among the top 2% of researchers worldwide, according to a Stanford University list that identifies top-cited scholars in their respective fields.



Generous funding opportunities available:

- Achievement Scholarships
- Graduate assistantships
- Research assistantships
- Tutoring and teaching in the undergraduate programs

Apply to SLS:



Connect with our SLS 'ohana:



@slshawaii

hawaii.edu/sls

Contact us:

grdchr@hawaii.edu
 Department of Second
 Language Studies
 Moore Hall 570,
 1890 East-West Road,
 Honolulu, Hawai'i 96822
 USA
 +1 (808) 956-8610



Diverse pathways after graduation

Graduates build careers in higher education, language assessment, international organizations, educational technology, and global industry.



Choice of five tracks

The MA in SLS allows students to concentrate in a particular area. Each track is noted on the student's transcript upon graduation.



Small student-faculty ratio, 'ohana culture

- Close-knit academic community
- Strong dedication to student success
- Faculty-student collaboration & mentorship
- Diverse international student body
- One community—one 'ohana

The 33rd Korea TESOL International Conference
Criticality, Innovation, and Compassion:
Rethinking Language Education in Times of Change

May 16 & 17, 2026

Sookmyung Women's University
Seoul, Republic of Korea
koreatesol.org/ic2026

Schedule Book Contents

Overview Schedule: SATURDAY.....	2
Overview Schedule: SUNDAY.....	3
Daily Schedule: SATURDAY.....	4
Saturday Poster Sessions.....	13
Daily Schedule: SUNDAY.....	14
Sunday Poster Sessions.....	21
Online (Asynchronous) Sessions.....	22
Venue Maps.....	23
Conference Committee.....	26
KOTESOL Events & Information.....	27

Program Book



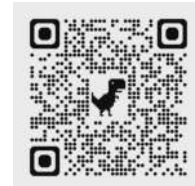
Master Schedule



Website



Video Sessions
(YouTube Playlist)



Saturday, May 16, 2026

08:00 start	Registration + Socializing Prime Building, B1 <i>Please enjoy the Marketplace and sponsors in our exhibits area!</i>	
09:00-09:50	Concurrent Sessions	
10:15-10:55	Opening Ceremony & K-Performance Samsung Hall, Centennial Building	
11:00-11:50	Plenary: Thomas S.C. Farrell 10 Principles of Effective Teaching for Teacher Well-Being Samsung Hall, Centennial Building	
12:00-13:00	Lunch Break KOTESOL Cafe (B1) <i>Provided for all pre-registered participants who opted in</i>	
13:00-13:50	Featured Session: Hyun-Sook Kang Language Teacher Agency in the Ecosystems of Internationalized Higher Education R405	Second Session: Nathanael Rudolph Contextualizing (English) Language Education: Exploring "Whys," "Whos," "Hows," and "Whats" R404
14:00-14:50	Featured Session: Michael Rabbidge Reframing English Education: Translanguaging, Identity, and Ideological Resistance R405	Invited Presentation: Ian Moodie Rethinking Expatriate TESOL Careers in Korea: A Photo-Narrative Inquiry into Professional Growth R404
15:00-15:30	Coffee Break KOTESOL Cafe (B1) <i>Enjoy complimentary coffee as you socialize and visit the exhibits area!</i>	
15:30-16:20	Featured Session: Ju Seong Lee Informal Digital Learning of English for AI Natives in Low-Resource Areas R405	Invited Session: Janet Mikyung Kim Securing Assessment Fairness: An Evidence-Based Assignment Approach in the AI Era R404
16:30-17:20	Featured Session: Curtis Kelly How Neuroscience Shows Us That Tasks Are Mandatory, Not Optional R405	Invited Panel: Compassion in ELT Heidi Vande Voort Nam, Cheryl Woelk, Michael Rabbidge, Megan Beard R404
17:30-17:55	Concurrent Sessions	
18:00-20:00	The Social @KOTESOL2026 (ticketed event) Han Sang Eun Lounge Centennial Building, 7 th Floor	

Prime Lobby (B1)**Registration:** 08:00-16:00**Coat & Bag Check:** 08:00-18:00**Exhibits Area:** 08:00-18:00**Information Desk:** 08:00-18:00→ **Attendance Certificates:** 12:00-18:00*Presenter Lounge: P304***Overview Schedule: SATURDAY**

Sunday, May 17, 2026

08:00 start	Registration + Socializing Prime Building, B1 <i>Please enjoy the Marketplace and sponsors in our exhibits area!</i>	
09:00-09:50	Concurrent Sessions	
10:00-10:50	Featured Session: David Perrodin Critical Pedagogies of Care: Reimagining English Language Teaching in Asia R405	Second Session: Ju Seong Lee Using AI Tools to Overcome Anxiety and Build Confidence in Language Learning R404
11:00-11:50	Plenary: Nathanael Rudolph Transdisciplinary, Community-Based Approaches to Being, Becoming, and Belonging in Language Education: (Re-)envisioning Theory, Research, and Teaching Samsung Hall, Centennial Building	
12:00-13:00	Lunch Break KOTESOL Cafe (B1) <i>Provided for all pre-registered participants who opted in</i>	
13:00-13:50	Featured Session: Kyungja Ahn Second Language Teacher Education: Bridging Theory, Practice, and Research R405	Second Session: Curtis Kelly Putting Neuroscience to Work in Methods and Materials R404
14:00-14:50	Featured Session: Kilryoung Lee Compassion, Is It Central or Marginal in an EFL Classroom? R405	Invited Panel: Criticality in ELT Hyun-Sook Kang, Nathanael Rudolph, Stewart Gray, Teri Roh, Meerbek Kudaibergenov R404
15:00-15:55	Concurrent Sessions	
16:00-16:30	Closing Ceremony P201	

Prime Lobby (B1)

Registration: 08:00-13:00
Coat & Bag Check: 08:00-16:00
Exhibits Area: 08:00-15:30

Information Desk: 08:00-15:00
→ Attendance Certificates: 08:00-15:00
Presenter Lounge: P304



Saturday, May 16**09:00–09:25**

Sittie Noffaisah Pasandalan, Fitria Rahmawati The Golden Hour of Quinquagenarian Teachers in the ICT Era (Research; 25 minutes)	P102
Piyatida Changpueng Using Generative AI and Formative Assessment to Develop ESP Presentation Skills (Research; 25 minutes)	P103
Brandon Narasaki Teaching for Belonging: A Compassionate Path to Intrinsic Motivation (Research; 25 minutes)	P104
Maythiya Khruawan, Sasa Watanapokakul Effectiveness of Redesigned Active Learning-Based English Listening-Speaking Course for Medical Technology Students (Research; 25 mins)	P201
Karnchanoke Wattanasin MyGPT-Tailored English Learning in Large Thai University Classes: Student Perceptions & Teacher Identity (Research; 25 minutes)	P203
Maryam Fakhrol Anuar Speak First, Correct Later: Delayed Oral Corrective Feedback in A2 Classroom Interaction (Research; 25 minutes)	P205
Nguyễn Thị Là Learning with AI: How AI Tools Influence Learner Autonomy in EFL Contexts (Research; 25 minutes)	P206
Thomas Legge Challenges for Administrators in Recruiting Japanese University Students for Study Abroad Programs (Research; 25 minutes)	R402
Jeni Li Localised Interculturality in Chinese Primary EFL Classrooms (Research; 25 minutes)	R406
Christine Yi Using Critical Incidents to Empathize with Language Learner Identities (Research; 25 minutes)	R407
09:00–09:50	
Heejeon Bras Developing L2 Reading and Writing Fluency Through Thinking Rhetorically (Workshop; 50 minutes)	P105
Bulbul Tulyegyen, Kunshuakh Bazar, Volodya Khovdabai, Khurmyetbyek Donyenbai Young Learners and Secondary Education (Workshop; 50 minutes)	P204
Max Diaz, Nate Ming Curran, Amy Suen, Mik Fanguy, Ryan Hunter Informed Perspectives: How Experiences as Educators in Korea Have Prepared Us for Our Current Roles in Hong Kong (Panel; 50 minutes)	R404
Tanja Hafenstein, Adrian Cohen Creating Inclusive Learning Environments in the Language Classroom (Workshop; 50 minutes)	R405

09:30–09:55	
Nguyen Thanh-Huyen An Exploration of Second Career Language Teacher Agency (Research; 25 minutes)	P102
Garrett DeHond Investigating Metafunctions of Turnitin AI Detected Text (Research; 25 minutes)	P103
Khin Moh Moh Aung Gamification and Learner Engagement in Online EFL Classrooms (Research; 25 minutes)	P104
Mayumi Asaba Adaptive Expertise in L2 Writing Teachers' Integration of AI Tools (Research; 25 minutes)	P201
Karnchanoke Wattanasin, Aratchaphorn Pensiri, Watcharee Paisart Shaping Speaking Confidence: Task Design and Interaction in Thai Classrooms (Research; 25 minutes)	P203
Jeffrey Maxwell Defining Psychological Retention in Compulsory English Course (Research; 25 minutes)	P205
Chuan Tian When English Feels Safer: Navigating Queer Self-Disclosure Across Languages (Research; 25 minutes)	P206
Nguyen Hoang Mai Tram, Ju Seong Lee AI-IDLE Coaching: Innovating EFL Speaking Practice in Exam-Oriented Contexts (Research; 25 minutes)	R402
Haley Penny, Yolanda Ruiz de Zarobe Advancing TESOL through CLIL: Linking Language, Sustainability, and Global Citizenship Education (Research; 25 minutes)	R406
Hsiao-Wen Hsu Foreign Language Enjoyment and English Achievement among Technological University Students (Research; 25 minutes)	R407
10:15–11:00	
Opening Ceremony and Culture Performance Samsung Hall, Centennial Building	
11:00–11:50	
Plenary: Thomas S.C. Farrell 10 Principles of Effective Teaching for Teacher Well-Being Samsung Hall, Centennial Building	
12:00–13:00	
Lunch Break <i>Lunch is provided in the KOTESOL Cafe for pre-registered participants who opted in.</i>	
13:00–15:00	
Poster Session 1 Prime Lobby (B1)	



13:00–13:25	
Men Pham Thi Exploring Pre-service EFL Teachers' Competence of TPACK: Technological Pedagogical and Content Knowledge in Writing Classes (Research; 25 minutes)	P103
Munkhtuya Amgalan Developing Social-Emotional Competencies in the English and Health Integrated Classroom (Research; 25 minutes)	P104
Andrew Schenck Regulating AI in L2 Writing: The Roles of Metacognition, Learning Strategies, and Critical Thinking (Research; 25 minutes)	P201
Ayano Shino Diversity of ALTs in English Education in Japanese Primary Schools (Research; 25 minutes)	P203
Jia-en Huang Reflective Screencasting: Developing Writing Teacher Feedback Literacy (Research; 25 minutes)	P204
Tran Thi Que Thanh, Nguyen Phan Anh Quan Teaching English Short Fiction to Vietnamese GenZ Students Using Corpus Stylistics (Research; 25 minutes)	P205
Soyoung Han Mapping Belonging: Critical Language Awareness and Intersectionality in International TESOL Graduate Students' Experiences (Research; 25 minutes)	P206
Sawaros Jaiprasong Compassionate Persuasion and Identity in Global Englishes Business Email Writing (Research; 25 minutes)	R402
Fitrotul Maulidiyah "Is This Cheating?" ELLs' Perceptions of Academic Integrity When Using AI (Research; 25 minutes)	R407
13:00–13:50	
Invited 2nd Session: Nathanael Rudolph Contextualizing (English) Language Education: Exploring "Whys," "Whos," "Hows," and "Whats" (50 minutes)	R404
Featured Session: Hyun-Sook Kang Language Teacher Agency in the Ecosystems of Internationalized Higher Education (50 minutes)	R405
Commercial Partner Session: Janet Mikyung Kim (Turnitin) Data-Driven Trust: Using Turnitin Clarity to Validate Student Effort (50 minutes)	R406
Ariunzaya D., Badamsuren B., Tserendorj K. The Power of Social-Centered Habits for Language Learning (Workshop; 50 minutes)	P102
Brandon Narasaki Beyond Grades: Compassionate Practices for Intrinsic Motivation (Workshop; 50 minutes)	P105

13:30–13:55	
Mutsumi Kondo, Ai Hirai, Tetsushi Kajiro, Lisa Yoshikawa A Case of Collaborative Autoethnography on English Curriculum Revisions in Japanese Universities (Research; 25 minutes)	P103
Le Ngoc Thanh Trung Broadening Horizons: Exploring the Impact of Diverse English Varieties on High School Students' Attitudes (Research; 25 minutes)	P104
Trang Nguyen Thi Thuy University Students' Engagement With the Affordances of Dialogic Multimodal Feedback for L2 Academic Writing (Research; 25 minutes)	P201
Siti Aisyah Mohd Adaha Global Platforms, Local Classrooms: Aligning Digital Textbook Curricula with ESL Learners' Needs (Research; 25 minutes)	P203
Anis Handayani, Hardian Zudianto, Dewi Nur Widiyati Understanding EFL Writing Motivation Through AI, Peer, and Teacher Feedback (Research; 25 minutes)	P204
Akiyo Joto, Hyunsong Chung, Pawalee Boonpok, Yuko Hakozi, Tsuneo Kato, Yuri Nishio Pronunciation Beliefs and Practices Among Primary Students and Teachers in Asian Countries (Research; 25 minutes; HYBRID)	P205
Chen, Wen-Chun Examining Multimodal Interaction Across Disciplines in EMI Classrooms (Research; 25 minutes)	P206
Hiroyuki Okazaki Reflective Processes Shaping Practical Knowledge in Early-Career English Teachers in Japan (Research; 25 minutes)	R402
Kichan Park The Effect of Majoring in English on the Development of English Comprehension Skills Among Korean College Students (Research; 25 minutes)	R407
14:00–14:25	
Elena Martin-Monje Compassion in Times of Change: Visual Narratives of Migration in an Erasmus+ MOOC for ELT (Research; 25 minutes)	P103
Van Anh Cao Same Goal, Different Games: A Reflective Comparison of IELTS and PTE Academic (Research; 25 minutes)	P104
Dewi Nur Widiyati Assessing Across Cultures: Indonesian EFL Teachers' Beliefs on Culturally Sensitive Assessment Practices (Research; 25 minutes)	P204
Dwiansari Ramadhani EFL Students' Experiences with ChatPDF and Research Rabbit in Academic Research Writing (Research; 25 minutes)	P205
Kevin Reay Wrobetz Expectations and Memory: Enhancing L2 Vocabulary Acquisition Through Differentiated Difficulty (Research; 25 minutes)	P206

Wan Yee Winsy Lai, Ju Seong Lee The Ecology of IDLE Barriers in Indonesian EFL (Research; 25 minutes)	R402
14:00–14:50	
Invited Presentation: Ian Moodie Rethinking Expatriate TESOL Careers in Korea: A Photo-Narrative Inquiry Into Professional Growth	R404
Featured Session: Michael Rabbidge Reframing English Education: Translanguaging, Identity, and Ideological Resistance	R405
Commercial Partner Session: Sedique Popal (University of San Francisco) Online MA TESOL/Certificate Program at the University of San Francisco (50 minutes)	R406
Cheryl Woelk Eco-Peace Collaborative Dialogue Simulations: Connecting Environmental Education and ELT through Peace Linguistics (Workshop; 50 minutes)	P102
Verna Zafra-Kasala Reworking the Peer Review: Building Feedback Literacy in ELT (Workshop; 50 minutes)	P105
Joe Greenwood, Nicholas Caballero From Wallflowers to Fire-starters: Student-Led Learning via Multimodal Pathways (Workshop; 50 minutes)	P201
Max Watson Building Your AI Co-Teacher: A Framework for Creation and Assessment (Workshop; 50 minutes)	P203
Elaine Ng Critical Writing, Empathy, and Medical Humanities for TESOL in the AI Age (Workshop; 50 minutes)	R407
14:30–14:55	
Precious R. Gallo Communicative Language Teaching and Strategies in EFL Tutoring Context (Research; 25 minutes)	P103
John Breckenfeld, Chris Kobylinski, and Shaun Manning Comparing Student Use of AI- vs. Teacher-Feedback in Revisions (Research; 25 minutes)	P104
Yuri Nishio, Toru Tatsumi, Akiyo Joto Perception and Production of English Segments and Suprasegments in Japanese Children (Research; 25 minutes)	P204
Binh Pham Reframing Student Behavior Through Collaborative Reflective Practice (Research; 25 minutes)	P205
Hasina Momtaz Rethinking Student Support System as Pedagogical Care: A Critical Narrative Inquiry (Research; 25 minutes; ZOOM)	P206
Xinwei Pan, Ju Seong Lee The Interplay Between Informal Digital Learning of English (IDLE) and Positive Psychology: A Systematic Review (2015-2025) (Research; 25 minutes)	R402

15:00–15:30	
Coffee Break KOTESOL Cafe (B1)	
15:15–17:15	
Poster Session 2 Prime Lobby (B1)	
15:30–15:55	
Partner Session: Kwang Hee Hong (KATE) What is the Role of ESL Teachers in a Time of AI-Teacher Coexistence? (Research; 25 minutes)	R407
Esther Wansing Soo, Eunice Tan Reading the Signals: How Students Perceive Care and Approachability in Higher Education (Research; 25 minutes)	P104
Chuxu Yu Willingness to Communicate in English: A Comparative Study of Human, AI Assistant, and AI Toy Interlocutors (Research; 25 minutes)	P201
Nurshash Shugaatai, Purevsuren Myagmar The Balancing Act: Examining the Influence of English Language Dominance on Native Language Use and Literacy (Research; 25 minutes)	P203
Matt Lucas Designing a Digital Materials Curriculum for EFL Teacher Education in Japan (Research; 25 minutes)	P204
Heejin Song, John McGaughey Disrupting the Neoliberal Order: Critical Action Research-Informed EAP Teaching in Higher Education (Research; 25 minutes)	P205
Peter Joun How American English became the "Standard" in Japan and Foreshadowed South Korea (Research; 25 minutes; ZOOM)	P206
Jeff Baldwin, Natasha Powell, Reece Randall Student Perceptions of Human vs. ChatGPT Writing Feedback (Preliminary) (Research; 25 minutes)	R402
Cheryl Woelk, Jocelyn Wright Learning From Shame in Language Learning Through Reflective Practice (Research; 25 minutes)	R406
15:30–16:20	
Invited Session: Janet Mikyung Kim Securing Assessment Fairness: An Evidence-Based Assignment Approach in the AI Era (50 minutes)	R404
Featured Session: Ju Seong Lee Informal Digital Learning of English for AI Natives in Low-Resource Areas (50 minutes)	R405
John Breckenfeld, Chris Kobylnski, and Shaun Manning A Critical Reflection of Teachers' Investigation of AI Feedback (Roundtable Discussion; 50 minutes)	P103

Vicky Wason Freedom 250: Freedom to use AI & Build Student-Centered Classrooms Through Communication (Workshop; 50 minutes)	P105
15:30–16:55	
Graduate Student Showcase Shunsuke Ito , Comparing Readability and Vocabulary in Korean and Japanese High School English Textbooks (15 minutes) Unaree Taladngoen, Sasa Watanapokakul , Metacognitive Instructional Model for Enhancing Thai Undergraduates' English Listening and Speaking: Development and Assessment (15 minutes) Putri Fatimatuz Zuhro , Teacher Stroking and Classroom Climate Effects on EFL Speaking Anxiety (15 minutes) Wutyi Aung , Three Decades of Written Corrective Feedback Meta-Analysis: Evidence, Limits, and Future Directions (15 minutes) Nassareeya Norlalin , The Application of Grammarly to Enhance Thai EFL Undergraduates' Self-Efficacy in Writing (15 minutes) Rebecca Clippard , Language Teacher Identity of Assistant Language Teachers in Japan (15 minutes)	P102
16:00–16:25	
Partner Session: Yun Joon “Jason” Lee (KAPEE) Elements of Fluency: Mixing Infographics, Culture, and Language With Disney's <i>Elementals</i> (Research; 25 minutes)	R407
Thi My Dung (Michelle) Dang Transforming Business English Instruction with AI: Insights From Vietnamese Undergraduates (Research; 25 minutes)	P201
Laurence Craven Language Complexity in Human and AI Writing: A Corpus-Based Comparison of ChatGPT and English L2 Student Texts (Research; 25 minutes)	P203
Jeng-yih Tim Hsu, Hsuan-yung Lalita-Hsu, Yi-ning Dora Lin Unpacking Student Gains in Multilingual Contexts Through Short-Term Study Abroad Programs (Research; 25 minutes)	P204
Amy Grobicki From Travellers to Teachers: Investment and NEST Teacher Identity Transformation (Research; 25 minutes)	P205
Nancy Shzh-Chen Lee Supporting Trilingual Development Beyond the Classroom: Interactional Practices in a Kyoto Community (Research; 25 minutes; ZOOM)	P206
Junko Toyoda, Tatsuya Taguchi Exploring Predictors of Classroom L2 Willingness to Communicate Among Japanese EFL Learners: An Experience Sampling Study (Research; 25 minutes)	R402
Mamiko Orii Beliefs and Practices of Community-Based English Assistants in Japanese Primary Schools (Research; 25 minutes)	R406

16:00–16:50	
Alex Grevett Innovating Humanity Into Writing Assessment Through Voice and Process (Workshop; 50 minutes)	P104
16:30–16:55	
Partner Session: Hyeonjoo Lee (KAESP) Translanguaging as Identity Work in a K-pop Trainee’s English Learning (Research; 25 minutes)	R407
Ngoc Thi Bich Nguyen, Anh Hoang Phuong Le, Huy Gia Nguyen Navigating the AI Frontier: Perceptions and Practices of EFL Students in Thesis Writing (Research; 25 minutes)	P103
Woomee Kim Engaging Multilingual Families through Transliterations Projects: Four Cases (Research; 25 minutes)	P105
Victor Reeser Designing Rhetorical Agency in AI-Supported Academic Writing (Research; 25 minutes)	P201
Andrew Prosser Re-working “Fair”: Dialogical Negotiation of University Admission Routes in L2 Focus Groups (Research; 25 minutes)	P203
Shie Sato Writing Beyond Proficiency: Features of AI-Generated Language in L2 Writing (Research; 25 minutes)	P204
Nguyen Hong Ha My, Truong Thien Tran, Bui Phan Chau Anh Negotiating Professional Identity under Parental Pressure (Research; 25 minutes)	P205
Roghayeh Pourbahram Migration and Motivation: The Story of Expatriate EFL Teachers in Türkiye (Research; 25 minutes; ZOOM)	P206
Jenny Haley Belonging Before Risk: Compassion-Centered University Peer Tutoring for International Students (Research; 25 minutes)	R402
Richard Rose Investigating Azure Automated Pronunciation Assessment via Classroom and Corpus Data (Research; 25 minutes)	R406
16:30–17:20	
Invited Panel: Compassion in ELT Heidi Vande Voort Nam, Cheryl Woelk, Michael Rabbidge, Megan Beard (50 minutes)	R404
Featured Session: Curtis Kelly How Neuroscience Shows Us That Tasks Are Mandatory, Not Optional (50 minutes)	R405
17:00–17:25	
International Partner Session: Kai-kim Cheung (ETA-ROC) Enhancing EFL Learners’ Language Proficiency via Literature: A Case Study of “Everyday Use” (Research; 25 minutes)	P201
International Partner Session: Margie Alcaide (PALT) Humanizing Language Education With Photo Voice: Digital Storytelling for Communicative Competence (Research; 25 minutes)	P203

International Partner Session: Anuchaya Montakantiwong (ThaiTESOL) Whose Knowledge Counts in Humanities EMI? Reframing EMI from English Proficiency to Epistemic Equity (Research; 25 minutes)	P205
Saki Suemori Methodological Trends in Language Education Journals Published in Japan (Research; 25 minutes)	P105
Ho Thi Phuong Nam Using Exit Tickets for Curriculum Materials Development in a Test-Preparation Course (Research; 25 minutes; ZOOM)	P206
Inge Odendaal From Extracurricular to Curriculum: A MUN-Inspired Simulation Model for Intermediate Learners (Research; 25 minutes)	R406
17:00–17:50	
Nicholas Caballero The Competence Conspiracy: Reimagining Student Capability (Workshop; 50 minutes)	P102
John Breckenfeld Making Extra Credit Extra Meaningful (Workshop; 50 minutes)	P103
Andrew (Mauro) Pratt What Happened to You? Understanding Trauma and Its Effects on Student Learning (Workshop; 50 minutes)	P104
Kristina Kauss Giving Students a Voice Through Project-Based Learning in EFL (Workshop; 50 minutes)	P204
Eleanor Kane Global Englishes Through a Soft CLIL Approach (Workshop; 50 minutes)	R402
Kristin Erin Graw Designing Equitable Classroom Assessments for K-12 Multilingual Learners (Workshop; 50 minutes)	R407
17:30–17:55	
Huyen Nguyen Thi Thuong Perceptions and Use of AI Tools in EFL Learning at a Regional University (Research; 25 minutes)	P105
Xian Liu, Ju Seong Lee Mapping the Methodological Landscape of Informal Digital Learning of English: Current Trends and Future Directions (Research; 25 minutes)	P201
Nicholas Musty Insights on the Emotional Composition of EFL Students (Research; 25 minutes)	P203
Max Watson Linguistic Profiling to Identify Authentic Student Voices (Research; 25 minutes)	P205
Nguyen Khanh Decoding Teacher Feedback: Intentions and Linguistic Strategies in Written Comments (Research; 25 minutes; ZOOM)	P206
Travis Compton, Tatiana Momoldaeva Student Perceptions of ChatGPT-generated Feedback on English Essay Writing (Research; 25 minutes)	R404
Thi My Dung (Michelle) Dang Compassionate Blended ESP Pedagogy in Vietnam (Research; 25 minutes)	R405

Richard Rose Detecting LLM-Generated Text via Authorship Familiarity (Research; 25 minutes)	R406
18:00–20:00	
The Social @KOTESOL2026 (ticketed) Han Sang Eun Lounge, Centennial Building, 7 th Floor	

Poster Sessions Prime Lobby (B1)	
Session 1 13:00–15:00	Session 2 15:15–17:15
Martin Sedaghat Exit Tickets for Assessment, Feedback, and Self-Reflection	Wei-Ting Lin Designing English Textbook Readings on Taiwan’s Energy Transition
Mark Dressman, Bhavishya, Harsh Sampat, Utkarsh Jajodia “The Art of the Deal”: Learning Negotiation at an EMI Indian B-School	Eleanor Kane, Melissa Huntley Preparing Lower Proficiency Students for Virtual Exchange and Collaborative Online International Learning
Solongo Ganbat, Zayasaikhan Sangaa, Gantsetseg Namjil, Ulziibayar Tserendorj, Orkhontuya Luvsan Memorizing Isolated Vocabulary	Mark Dressman, Tanishk Chouhan, Rohan Ranjit Transforming Business English at an EMI Indian Professional Institute
Heather Suzuki Overcoming Classroom Layout Barriers for Active and Inclusive Language Learning	Courtney Ye From Assessors to Collaborators: Human-AI Teaming in Tertiary Writing Instruction
Travis Compton Beyond Books: Early Observations From Extensive RPGing	
Akiko Hagiwara, Kaoru Kobayashi Anticipatory “It” in Student Science Reports: Frequency and Metadiscourse Patterns	

twinkl **ESL** Curriculum Kids Teens Adults Exams Business

Still spending hours planning one class?

- ✓ CEFR- aligned resources
- ✓ Created by English teachers for English teachers
- ✓ Activities, lessons, assessment materials, games and more

Ready in One Click

Choose Your Own Adventure: Silly Comparatives and Superlatives
An ESL Game

25 Speaking Activities for Festive Fun!
ESL Speaking 2024
B1

Conditional Questions
Conversation Cards

All About Me: Blog

GO! The Phrasal Verbs Challenge Board Game

Daily Schedule: SATURDAY

Sunday, May 17**09:00–09:25**

International Partner Session: Chelanna White (JALT) From Conference to Community: Exploring Perceptions of PanSIG (Research; 25 minutes)	R407
Lam Hoang Thuy Anh Subjective Wellbeing of Second Career Language Teachers (Research; 25 minutes)	P102
Stephanie Ptak The Case for Rotating Assigned Seating in an English Conversation Course (Research; 25 minutes)	P104
Jordan Kee Empowering EFL Writers: Creative Writing as an Anxiety-Easing Strategy (Research; 25 minutes)	P105
Naheen Madarbakus-Ring Listening Strategy Use in Extensive Listening Practices (Research; 25 minutes)	P201
Haryo Aji Pambudi Genre-Based Project Learning Model and Instructional Framework for Contextual English Learning (Research; 25 minutes)	P203
Yi-chen Chen Exploring Creativity through AI-Facilitated Multimodal Composing in EFL Contexts (Research; 25 minutes)	P204
Karin Cruz Bujanda-Kanda Fostering Global Englishes Awareness and Intercultural Competence Through Listening (Research; 25 minutes)	P205
Made Wahyu Mahendra Voices from the Field: Professional Development Needs of Rural Indonesian English Teachers (Research; 25 minutes)	P206
Santa Maya Pramusita Between Survival and Speaking: AI-Dependent English Learning Among Nursing Students (Research; 25 minutes)	R402
Iain Stanley Using ChatGPT to Support Large-Scale Academic Writing Assessment (Research; 25 minutes)	R406

09:00–09:50

Uyen Dinh AI-Assisted Speaking for Young Learners Through Interactive Bingo (Workshop; 50 minutes)	P103
Jocelyn Wright, Robert J. Dickey, Kara MacDonald K-English: Ambiguity, Identity, Hybridity, Codification (Panel; 50 minutes)	R404
Adrian Cohen, Tanja Hafenstein Teaching with Equity, Creativity, and Compassion: Applying UDL to Support Diverse Learners (Workshop; 50 minutes)	R405

09:00–11:00

Poster Sessions
Prime Lobby (B1)

09:30–09:55	
International Partner Session: Qing Angel Ma (HAAL) The Influence of Professional Development on TESOL Teachers' Self-Efficacies for Independent Language Learning and Teaching: Focusing on TPACK for Corpus Technology (Research; 25 minutes)	R407
Katie Hibner Oceans Away: A Teacher's Journey From Refugee ESL to EAP in China (Research; 25 minutes)	P102
Kriangkrai Vathanalaoha Pedagogical Stylistics in Literary Studies: Emotive Enactment in Poe's Gothic Stories (Research; 25 minutes)	P104
Wei-Shan Chang Reframing EMI Teacher Knowledge for Bilingual Education: The LTPACK Literacy Model (Research; 25 minutes)	P105
Lauren Smith, Lara Zanotti, Emmalee Couch Developing TESOL Teacher Identity Through Innovating the Study Abroad Practicum (Research; 25 minutes)	P204
Vy Ha Minh Ngoc Quasi-experimental Study on the Effectiveness of Flipped Classroom and Students' Perceptions (Research; 25 minutes)	P205
Joey Andrew Santos Configuring Bilingual University Schoolscapes Through EMI: A Geosemiotic Perspective (Research; 25 minutes)	P206
Sari Hidayati Criticality in Educational Change: Teacher Agency in Indonesian Curriculum Reform (Research; 25 minutes)	R402
Serikbolsyn Tastanbek "I Can Relate": Teachers' Empathy in Forming a Translanguaging Stance (Research; 25 minutes)	R406
09:30–10:20	
Bryan Meadows How and Why to Introduce Folk Linguistics to your English Language Students (Workshop; 50 minutes)	P201
George Kokolas Crafting Character Through Language Learning (Workshop; 50 minutes)	P203
10:00–10:25	
International Partner Session: Jaya Ram Khanal (NELTA) Technology in ELF Classroom: Revolution in Students' Interest (Research; 25 minutes)	R407
Livianni Lambe Implementation Graphic Organizers in Project Based Learning Enhancing Students Reading Comprehension (Research; 25 minutes)	P103
Jordan Kee A Comparative Study of Drama's Role in EFL Student Confidence and Self-Expression (Research; 25 minutes)	P105
Undarmaa Maamuujav Multimodal Writing in Multilingual Space (Research; 25 minutes)	P204

Elni Jeini Usoh International Classes as Catalysts for Inclusive Higher Education Internationalisation (Research; 25 minutes)	P205
Duc Huy Ngo, Vu Tran-Thanh The Intersection of Micropolitics, Emotions, and Reality Shock in Novice Vietnamese Teachers (Research; 25 minutes)	P206
Adam Murray, Taiko Tsuchihira, Kei Miyazaki Classroom-based Assessment Practices in Japanese EFL Classrooms (Research; 25 minutes)	R406
10:00–10:50	
Invited 2nd Session: Ju Seong Lee Using AI Tools to Overcome Anxiety and Build Confidence in Language Learning (50 minutes)	R404
Featured Session: David Perrodin Critical Pedagogies of Care: Reimagining English Language Teaching in Asia (50 minutes)	R405
Naheen Madarbakus-Ring Using iPads and Voice Memos to Reflect on Extensive Listening Practices (Workshop; 50 minutes)	P102
Sedique Popal Teaching Paragraphs Communicatively and Using AI Tools to Fix Common Errors (Workshop; 50 minutes)	P104
Nikolay Ni Career Guidance and Decision-Making: Helping Learners Avoid Mismatched Career Choices (Workshop; 50 minutes)	R402
10:30–10:55	
International Partner Session: Narantsetseg Ravjaa (ELTAM) Challenges in Designing and Delivering ESP: The Case of Mongolian Universities (Research; 25 minutes)	R407
Aleksei Nekhaev Heuristic Approach as a Path to Critical Language Awareness (Research; 25 minutes)	P103
Daria Zhgun From Fragmented Thinking to Existential Wholeness: Cultivating Reflective Minds Through Literature-Based Learning (Research; 25 minutes)	P105
Daniel Bates Reframing Language Assessment Through Visual Thinking Strategies (Research; 25 minutes)	P201
Brent Green, Aliah Mae Flores, Jolina Vidal Examining the Viability of an Academic Lexico-grammatical Test for Admissions and Placement (Research; 25 minutes)	P203
Stephanie Ptak Devices Versus Printed Material in an English Conversation Course (Research; 25 minutes)	P204
Quynh Nga Nguyen Researching Teachers' Attitudes Toward English Varieties Using the River of Life Method (Research; 25 minutes)	P205

Mei-Li Chen Using Vocabulary-Based Predictive Modeling to Support Vocational Learners' English Proficiency (Research; 25 minutes)	P206
Michael Holsworth Microsoft Teams Reading Progress: The Impact on Reading Fluency and Comprehension (Research; 25 minutes)	R406
11:00–11:50	
<i>Plenary: Nathanael Rudolph</i> Transdisciplinary, Community-Based Approaches to Being, Becoming, and Belonging in Language Education: (Re-)envisioning Theory, Research, and Teaching Samsung Hall, Centennial Building	
12:00–13:00	
Lunch Break <i>Lunch is provided in the KOTESOL Cafe for pre-registered participants who opted in.</i>	
13:00–13:25	
Commercial Partner Session: Samantha Reeve (Twinkl) Empowering Critical Thinkers and Global Citizens With Twinkl (25 minutes)	R407
Curtis Life Past, Present, and Future: a Comparative Analysis of Korean Freshmen Motivation (Research; 25 minutes)	P104
Wipada Sutthiroj, Phanatdao Chantarasiri Navigating CLIL in the Thai EFL Context: Challenges and Adaptation Strategies (Research; 25 minutes)	P105
Patcharakorn Seemanath Investigating EFL Undergraduates' Attitudes Toward the Active Learning Through English in Workplace (Research; 25 minutes)	P201
Weerapa Pongpanich, Supachai Sae-eaw Generative AI in EFL Education: A Systematic and Bibliometric Review of Research Trends and Impacts (Research; 25 minutes)	P203
Yu-Ting Kao Developing Teachers' Capacity for Assessment for Learning through Dynamic Assessment in an Exam-Driven Context (Research; 25 minutes)	P205
Adrienne Lee Seo From Panels to Paragraphs: Graphic Novels, Multimodal Literacy, and Writing Development (Research; 25 minutes)	P206
13:00–13:50	
Invited 2nd Session: Curtis Kelly Putting Neuroscience to Work in Methods and Materials	R404
Featured Session: Kyungja Ahn (ALAK) Second Language Teacher Education: Bridging Theory, Practice, and Research	R405
Vu Tran-Thanh Compassion for the Language Classroom: Insights from a Buddhist Perspective (Workshop; 50 minutes)	P102
Catherine Sudo Collaborative Digital Annotation for Deep Reading and Student Engagement (Workshop; 50 minutes)	P204

Becky Sanchez Supporting Critical Thinking in Lower-Level Discussion Classes (Workshop; 50 minutes)	R402
Natalie Thibault Learning with Diagrams: Enhancing Expression, Comprehension, and Ideation in EFL Classrooms (101 Workshop; 50 minutes)	R406
13:30–13:55	
Nicole Cyr Balancing the Scales: The Dark Side of GenAI in Language Education (Research; 25 minutes)	P104
Rahmat Putra Rethinking Academic Writing: A Metacognitive-Based Model for Fostering Critical Literacy Skills in Indonesia Tertiary Education (Research; 25 minutes)	P201
Kieran Edward Rimmer Korean EFL Learners and English Varieties in Britain: Expectations, Exposure, and Experiences (Research; 25 minutes)	P203
Yen-Ju Chen AI Multimodal Storytelling and Its Impact on EFL Vocabulary Retention (Research; 25 minutes)	P205
Jeanne OConnell Innovating for Reliability and Compassion: A Data-Informed Framework for Rater Training (Research; 25 minutes)	P206
Sean Eric Kil Patrick Gay, Cristina Tat AI Pedagogy From the Dual Perspective of Peer Tutors (Research; 25 minutes)	R407
13:30–14:20	
Aleksei Nekhaev Literature as a Tool for Criticality, Empathy, and Motivation in ELT (Workshop; 50 minutes)	P103
Daniel Svoboda Existential Circles of Compassion: Yalom's Four Givens in the ELT Classroom (Workshop; 50 minutes)	P105
14:00–14:25	
Invited Second Session: Tom S.C. Farrell Reflecting on Reflective Practice (Q & A Session; 25 minutes)	P206
Eva Ernawati Simanjuntak Pre-Service English Teachers' Servant Leadership Practices in Marginalized Community Teaching (Research; 25 minutes)	P104
Vo Thi Anh Dao, Nguyen Thi Thao Vy Second-Career or Second-Class? Professional Identities of Vietnamese Second-Career Language Teachers (Research; 25 minutes)	P201
Supachai Saeew, Weerapa Pongpanich Students' Perceptions of Teacher VS AI-Generated Feedback: A Pre-Sessional EAP Writing Course (Research; 25 minutes)	P205
Eshauqi Fitrayatra The Politics of Indirect Communication: Language, Power, and Authority in an Indonesian School Context (Research; 25 minutes)	R406

Junko Otoshi, Mariko Uzuka International Collaboration: Communication Skills or Cultural Curiosity? (Research; 25 minutes)	R407
14:00–14:50	
Invited Panel: Criticality in ELT Hyun-Sook Kang, Nathanael Rudolph, Stewart Gray, Teri Roh, Meerbek Kudaibergenov (50 minutes)	R404
Featured Session: Kilryoung Lee Compassion, Is It Central or Marginal in an EFL Classroom? (50 minutes)	R405
Michael Schapiro Introducing Rhetoric and Debate Through Strategic Scaffolding (Workshop; 50 minutes)	P102
Sara McKenzie Hanson-Lynn, Daniel Leigh Paller Activities and Assessments to Coach EFL Students on Speaking Fluency (Workshop; 50 minutes)	P203
Undarmaa Maamuujav Academic Language and Historical Thinking: Cultivating Language Skills for Argument Writing (Workshop; 50 minutes)	P204
David James Woodcock, Epi Juarez Are Oral Defence Exams the Future of Defending Academic Integrity? (Workshop; 50 minutes)	R402
14:30–14:55	
Christine Joyce Dela Cruz Zafra Foreign Language Anxiety: Factors Affecting Thai Students' Speaking Proficiency (Research; 25 minutes)	P103
Shayna Kozuch Beyond the Classroom: Peer Mentoring as a Pathway to Language Development and Belonging (Research; 25 minutes)	P104
Luciana Varela Guerino Dialogic Analysis of Portuguese Language Textbooks Published in South Korea (Research; 25 minutes)	P201
Özgür Parlak Synchronous Video-Based Interaction and L2 Pronunciation Development (Research; 25 minutes)	P205
Mai Hương Trần AI Literacy as Situated Practice in EFL Academic Writing (Research; 25 minutes)	P206
Surasak Sae-lim Exploring Translanguaging Practices in Thai High-Proficiency Students: Their Roles and Proficiency-Based Comparison (Research; 25 minutes)	R406
14:30–15:20	
Diane Rozells, Robert Stroud, Brandy Bippes, Dzalila Muharemagic, Zarrina Salieva Culture Club: Connecting Classrooms, Cultures, and Communities Across the Globe (Panel; 50 minutes; HYBRID)	P105
Joe Greenwood I Have No Slides... (101 Workshop; 50 minutes)	R407

15:00–15:25	
Namal Wickramasekera Integrating Artificial Intelligence in English Language Classrooms: Opportunities and Challenges (Research; 25 minutes)	P103
Hideo Ozaki From Teacher-Centered to Learner-Centered: A CDST Perspective (Research; 25 minutes)	P104
Men Fangyu, Lee Ju Seong Teacher-Designed AI-Mediated Tasks vs. Traditional Classroom Tasks: Insights From Chinese EFL Learners (Research; 25 minutes)	P206
Miho Yamashita Improving High School Writing Instruction Through High School–University Collaboration in Japan (Research; 25 minutes)	R404
Mayumi Tanaka Critical Reading of “Rapunzel” in a University English Course (Research; 25 minutes)	R405
15:00–15:50	
William (Bill) Davis Guided Discovery for Grammar: A Student-Centred Approach to Grammar Teaching and Review (Workshop; 50 minutes)	P102
Maria Kulakovskaia Narrative Driven Problem Based Learning (Workshop; 50 minutes)	P201
Stefania Pasternak Adapting Games and Resources to Maximize Participation (Workshop; 50 minutes)	P203
James Kimball Reflective Practice: Focusing on Formative Feedback (Workshop; 50 minutes)	P204
Enkhchimeg Sharav Strengthening Intercultural Skills Through Global-Local Exchange (Roundtable Discussion; 50 minutes)	P205
David Shaffer Power Up on APA References and Citations (Workshop; 50 minutes)	R402
Alevtina Popova Meme-Driven Grammar Acquisition: Using Memes to Spark Comprehension (Workshop; 50 minutes)	R406
15:30–15:55	
Tanet Tanyawong, Patuma Choeichaiyapoom Recreational Activity Patterns of Thai Students in New Zealand (Research; 25 minutes)	P103
Han Xie Mapping the Digital Wild: From IDLE Research to Inclusive Classroom Practice (Research; 25 minutes)	P104
Chad David Anderson Take Home Testing for ESL Classes (Research; 25 minutes)	P105
Luke Lawrence English Language Learning and the Manosphere: A Guide for Teachers (Research; 25 minutes)	P206
Marshall Stauffer Modernizing the Remit of an EMI Writing Center (Research; 25 minutes)	R404

Daily Schedule: SUNDAY

Shuxin Lui, Ju Seong Lee Using Affordable AI Toys to Boost EFL Students' Willingness to Communicate (Research; 25 minutes)	R405
Dhanisa Kamila Exploring English and Korean Language Identities Among International Postgraduates in South Korea (Research; 25 minutes)	R407
16:00–16:30	
Closing Ceremony P201	

Sunday Poster Sessions
Prime Lobby (B1)
09:00–11:00

Zhenjie Weng, Yanan Zhao
Identity, Emotion, Agency & L2 Writing Teacher Expertise

G. Benjamin White
Integrating East Asian English-Language Newspapers into your English-L2 Classroom

Trinh Hong Linh
Developing a Collaborative Problem-Solving Competency Framework for Pre-service English Teachers

Michelle Johnson
Beyond Metrics: Writing Revision After AI Feedback

Chaewon Noh
Exploring the Effect of Perceived Korean EFL Teachers' Trait Emotional Intelligence on Motivation and Foreign Language Enjoyment

Emily Higgs Livingston, Donte Thrasher
Fostering AI Literacy in English Language Writing Classes



Online Video Sessions KoreaTESOL YouTube Channel

<p>Commercial Partner: Paul Raine (Eigo.ai / LingoLesson) AI for Language Teaching and Learning: Introducing Eigo.ai and LingoLesson</p>
<p>Robert Dykes, Alison Koga Accessibility for All: Different Needs in the Classroom (Pecha Kucha)</p>
<p>Valencia Epps Navigating Race and Ethnicity: Expatriate Women's Experiences in East Asian ELT (Pecha Kucha)</p>
<p>Tran Doan Thu Zine-making as an Academically Legitimate Assessment Tool for Creative Writing (Research)</p>
<p>Simon Perry Reimagining Legitimacy in English Language Education: NNEST Trajectories in East Asia (Research)</p>
<p>Nguyen Le Bao Ngoc, Nguyen Hoang Phuong Mai A UTAUT Model-Based Study on Vietnamese English Major Students' Perceptions of Generative AI (Research)</p>
<p>Nhung Le Voicing the Quiet: Vietnamese EFL Teachers on Supporting Speaking Reluctance (Research)</p>
<p>Nguyen Ngoc Thao Nguyen Emoji-Based Activities: An Innovative Approach to Advanced Vocabulary Acquisition (Workshop)</p>
<p>Chao-Wen Chiu Investing in Transformation: Identity and Capital in Project-Based ESP (Research)</p>
<p>Norman Fewell, George MacLean The Utilization of AI Feedback to Promote Autonomous Writing with NCSSFL-ACTFL Can-Do Statements (Research)</p>
<p>Norman Fewell, George MacLean Streamlining Collaborative Language Assessment with Cloud Platforms: Rubric Literacy, Weighted Scoring, and Data Interpretation in Blended and Online EFL Contexts (Research)</p>
<p>Hsiaoping Wu Pre-service Teachers' Knowledge in Integrating Culturally Relevant Videos (Research)</p>
<p>Krishna Dutta Empowering Rural Bangladeshi Secondary L2 Learners Through Indigenous Knowledge: An Eco-Linguistic Perspective</p>
<p>Mujib Hasib Lexical Imposed Textbook Demands and Learner Readiness in Early English Instruction in Indonesia</p>
<p>Kriti Arora From Meaning to Use: Student Perspectives on Production-Based Vocabulary Assessment</p>
<p>Nguyen Thi Nhu Nhien Engaging Young Learners in EFL Speaking Through Digital Storytelling: A Classroom-Based Study</p>
<p>Muhammad Azhar Kholidi Examining Ethical Dimensions of Artificial Intelligence Among EFL Students in Indonesia</p>
<p>Hui-Yu Chiu, Hui-Hsien Feng A Corpus-Based NLP Analysis of Humanities and STEM TED Talks</p>
<p>Chen-Hsuan Su, Pei-Hsuan Hsu, Hui-Hsien Feng Linguistic Representation of Social Class in <i>2 Broke Girls</i>: Formality, Directness, and Politeness in Sitcom Dialogue</p>

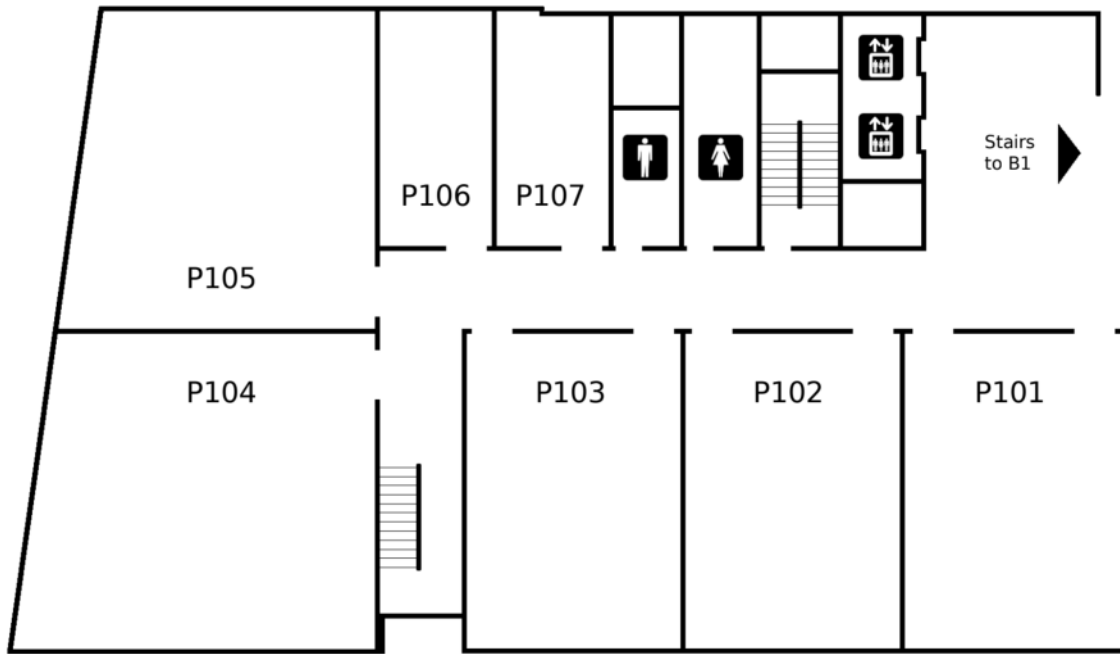
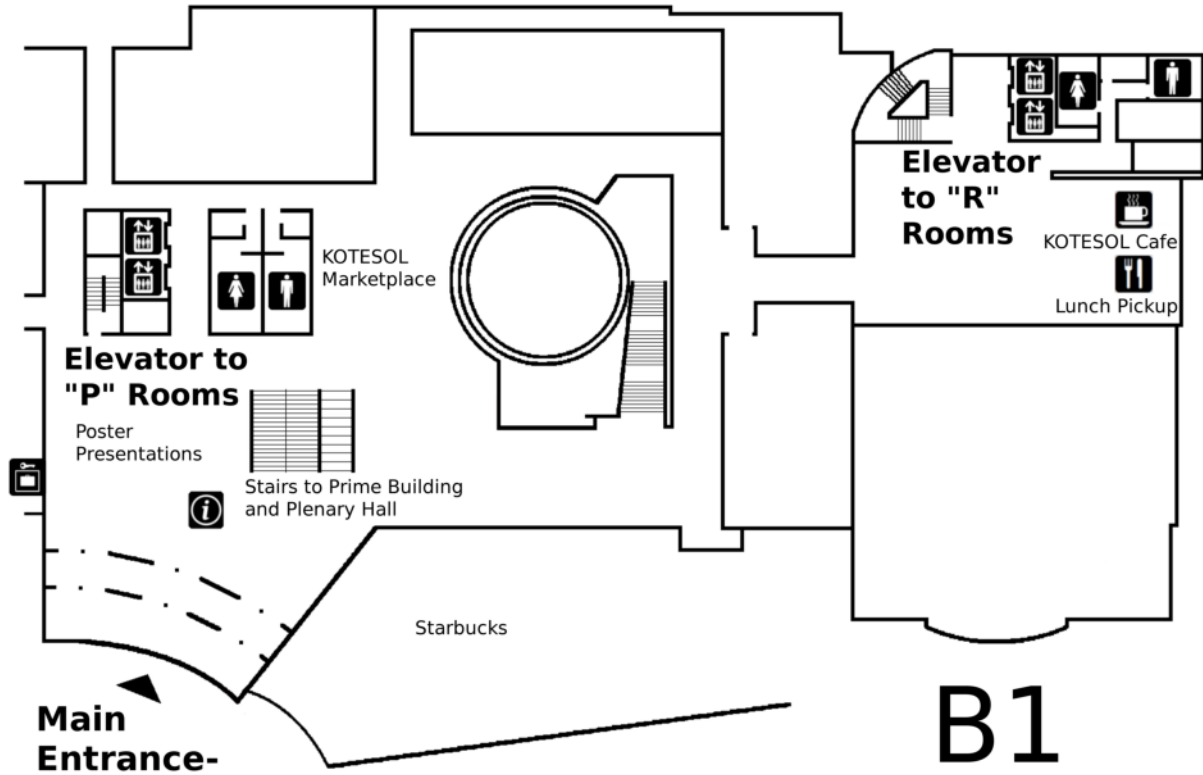
Online Posters

<p>Yoko Kita Selecting Wordless Picturebooks for English Read-Alouds in EFL Teacher Education (Poster)</p>

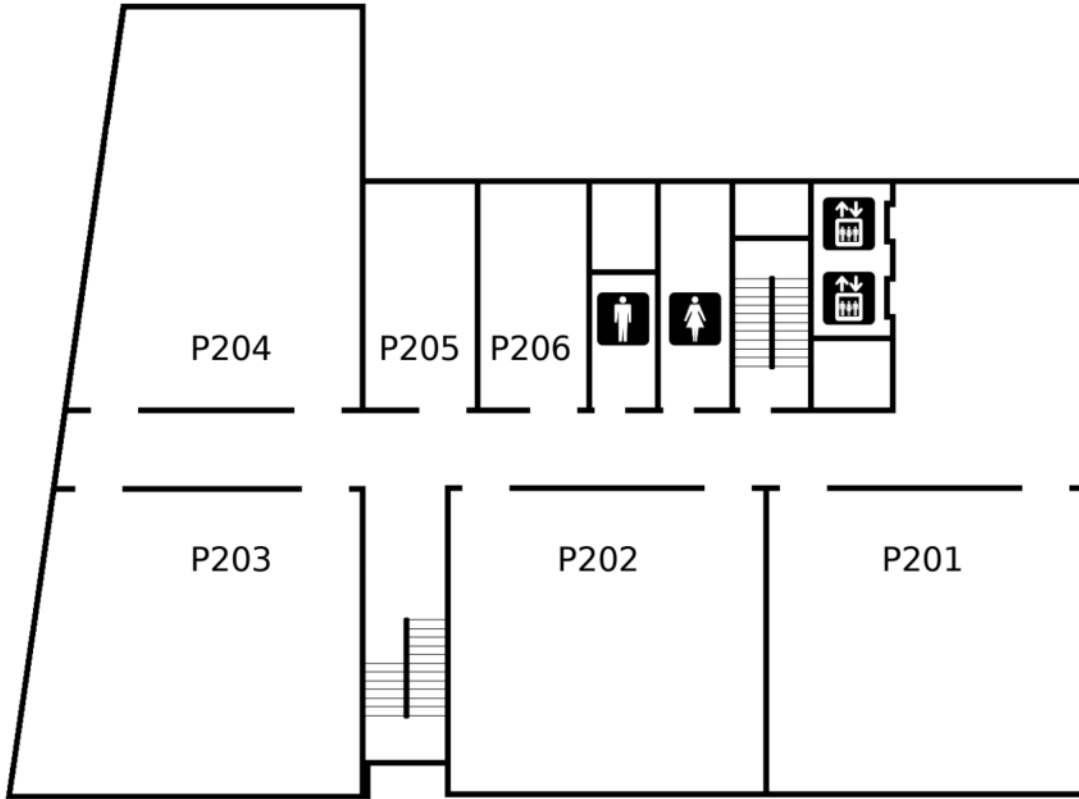


Video Playlist
YouTube Channel: KoreaTESOL

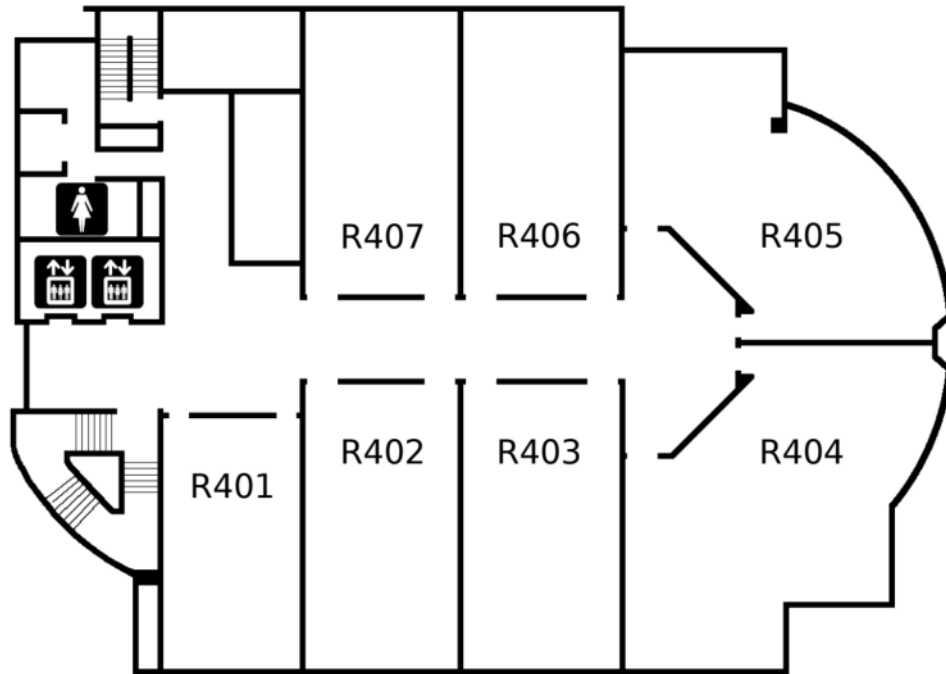
Venue Maps



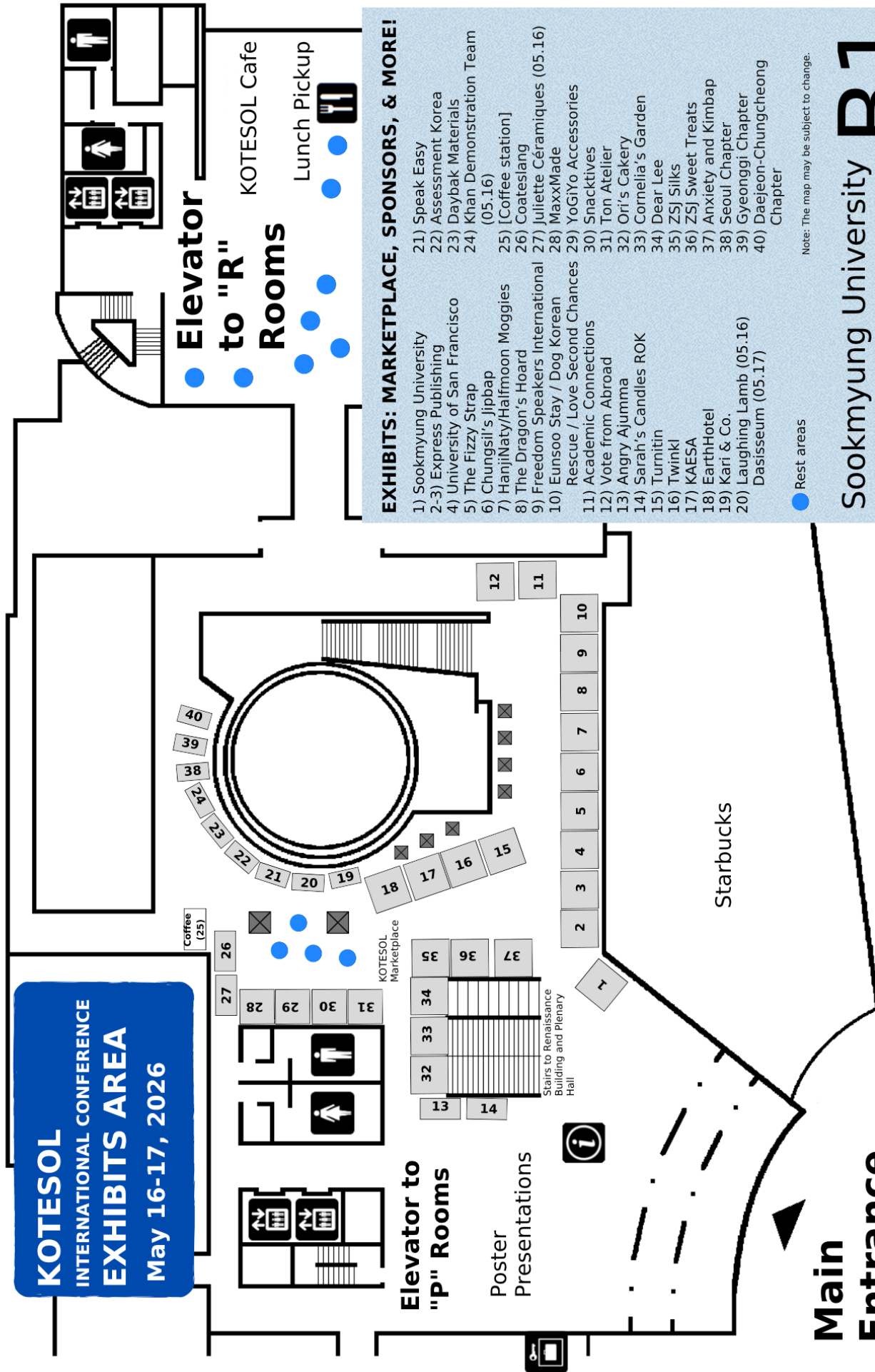
Prime 1F



Prime 2F



Renaissance 4F



The 33rd Korea TESOL International Conference Committee Members

Conference Chair	Meerbek Kudaibergenov	Human Resources Dir.	Wesley Martin
Conference Co-chair	Gabriela Villafradez	HR Associates Mgr.	Christina Tsoi
Conference Advisor	Rhea Metituk	HR Manager	James Rush
Program Director	Gabriela Villafradez	Signs Manager	Natalie Thibault
Program Coordinator	Michael Free	Hall manager	Greg Lewis
Program Book Ed. Asst.	J. Tom Wyatt	Hall manager	James Turnbull
Invited Speakers Director	Dave Shaffer	HR Manager	Efrida Sartika
Registration Director	Lindsay Herron	Financial Affairs Dir.	Dave Shaffer
Registration Manager	Phillip Schrank	Publicity Director	Maiah Hollander
Registration Manager	Courtney McLaren	Photographer	Martin Sketchley
Registration Manager	Bill Mulligan	Guest Services Dir.	Mike Peacock
Registration Manager	Sally Arkley	Guest Services Mgr.	Christopher Miller
Logistics Director	Sean O'Connor	Guest Services Mgr.	Melvin Dixon
Logistics Manager	Jun Hyuk Shin	Guest Services Mgr.	Rosemary Sorg
Stage Manager	Ingrid Zwaal	Guest Services Mgr.	Tory Thorkelson
Tech Coordinator	John Phillips	Food & Bev. Coord.	Kathy Moon
Tech Manager	Ryan McCurdy	Food & Bev. Mgr.	안형민 (Malik)
Tech Manager	Ethan Elliot Peterson	Food & Bev. Mgr.	강주희 (Sandy)
Tech Manager	Prabesh Paudel	Food & Bev. Mgr.	성태현 (Matthew)
Communications Coord.	Julie Ha	Food & Bev. Mgr.	김윤경 (Irene)
Chapter Liaison	Mike Peacock	Food & Bev. Mgr.	남형우 (Steve)
SIG Liaison	Gabriela Villafradez	Venue Director	Kang Nam Joon
Conference Sales Dir.	Lisa MacIntyre-Park	Venue Coordinator	Alicia Kwon
Marketplace Liaison	Rhett Burton		
Marketplace Liaison	Natalie Thibault		
Marketplace Liaison	Kristina Kauss		



Social Justice (Critical Educators in Korea) Special Interest Group

"In the spirit of heart and hope, members of this KOTESOL SIG will attempt to promote positive and pacific transformative social outcomes through teaching and learning."
(SIG Mission Statement)



Social Justice (Critical Educators in Korea) SIG Facebook group:

<https://www.facebook.com/groups/1995951900039913>

KOTESOL Social Justice SIG <https://kotesol.org/content/social-justice-critical-educators-korea-sig>

Email: sgsig@kotesol.org

THE WELL-BEING & PERSONAL DEVELOPMENT SIG

Mental & Physical Health

Our SIG exists to offer practical, accessible ways for educators to care for themselves while building meaningful connections with others in the ELT community.

Yoga & Meditation | Outdoor Activities | Community Meet-ups

Everyone is welcome.

More information: KOTESOL Well-Being & Personal Development SIG

KOTESOL Events & Information





Collaboration Across Borders

Saturday, 12 September 2026
 Seinan Gakuin Uni. Community Center, 6 Chome-2-92 Nishijin, Sawara Ward, Fukuoka City, Japan
 Call for presenters closes 13 June
<https://tinyurl.com/busangdchapter>
 Email: bgkotesol@gmail.com
 Registration: From July 2026
 KOTESOL and JALT members: Free
 Non-members: 20,000 won

Pictured: Fukuoka Tower and Momochi Beach, 15-min. on foot from the conference venue

Regional Conference
Challenges and Opportunities
for Provincial Education in Korea





CALL FOR PROPOSALS

We welcome proposals for workshops and panel discussions

Abstracts accepted until **June 26, 2026**

Proposal Acceptance Notification: July 17, 2026

Submit YOUR proposal here

For questions, email us:
jnj.presenters@gmail.com



September 5, 2026 (Sat)
12pm-5pm




Jeonbuk National University
Jeonju, Jeollabuk-do



This event is organized by the Jeonju North Jeolla KOTESOL Chapter




REFLECTIVE PRACTICE



2026, May 27th

WHAT?
SO WHAT?
NOW WHAT?

Event Details



7:00 P.M.

JOIN THE

KOTESOL RESEARCH SIG




<https://koreatesol.org/content/research>



KOTESOL Christian Teachers SIG



Find out more



<https://koreatesol.org/content/Christian-teachers>

BENEFITS OF

KOTESOL MEMBERSHIP



SAVINGS

KOTESOL members receive discounts on KOTESOL events (including the international conference, national conference, and regional conferences), many partner events, IATEFL membership, online courses, local restaurants, and more.



PUBLICATIONS

Members have immediate online access to all KOTESOL publications, including *The English Connection*, our quarterly magazine; *Korea TESOL Journal*, our peer-reviewed research journal; and *KOTESOL Proceedings*, our annual conference proceedings.



GRANTS & AWARDS

Members can apply for research grants, represent KOTESOL on a conference grant or travel grant, be considered for our Research Paper of the Year Award or the Reflective Language Teacher Award, and more.



SCHOLARSHIP

KOTESOL members can enhance their academic credentials by submitting work to KOTESOL publications or by presenting at KOTESOL conferences.



SPECIAL INTEREST GROUPS

KOTESOL Special Interest Groups (SIGs) provide a supportive space for members with a shared special interest to collaborate and mutually explore that interest.



... AND MORE!

Members also:

- can run for office and vote in KOTESOL elections;
- receive a variety of negotiated perks & discounts
- are invited to exclusive social & networking events;
- receive free shipping on KOTESOL merchandise;
- and more!

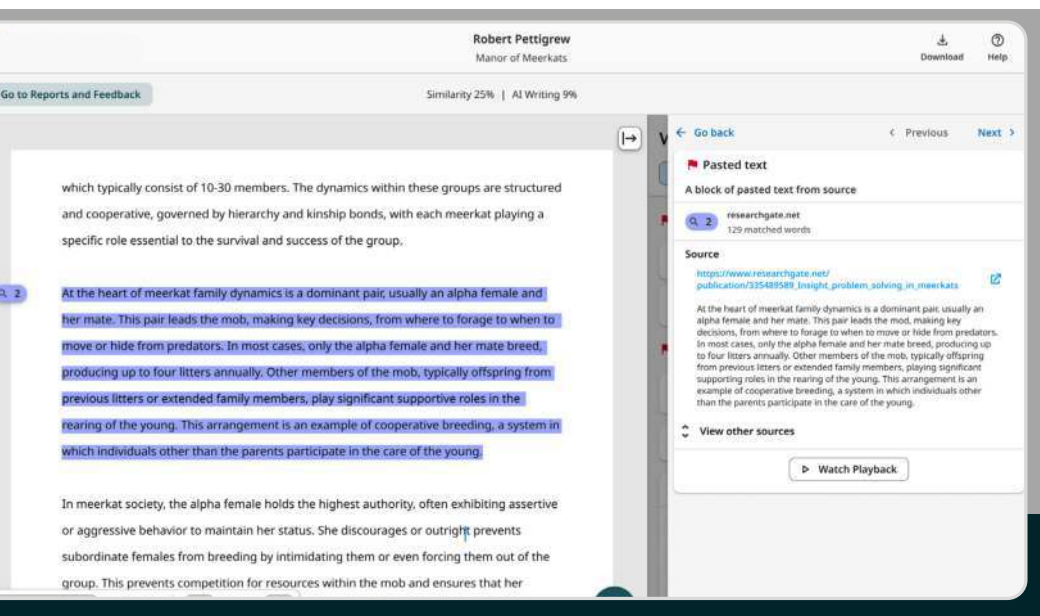
50,000 KRW / 40 USD 1-year domestic membership
70,000 KRW / 56 USD 1-year international membership
30,000 KRW / 24 USD 1-year undergraduate student membership
500,000 KRW / 400 USD lifetime membership

KOREATESOL.ORG/JOIN-KOTESOL

Turnitin Clarity

Bringing transparency to the writing process

Turnitin Clarity is a transparent writing tool that provides educators with insights into their students' writing process, helping them assess the originality of their students' work. It includes a composition space where students write their assignments, protecting the integrity of written works in an age where emerging challenges such as AI writing are a growing threat. With built-in AI tools, educators can further empower students to use AI responsibly.



A view of the writing process, not just the end product

Visibility into their students' writing process along with access to data and insights, gives instructors confidence that the work meets the integrity standards of their institution and is representative of their students' learning in the age of AI.

Responsible use of AI tools

AI-powered tools are already copilots to many students' learning and writing processes, without the benefit of instructor guidance. Turnitin Clarity enables instructors to integrate AI-powered tools into their teaching process to help students learn how to leverage AI responsibly and within the guidelines of their institution.

Integrity insights all in one place

Turnitin Feedback Studio (TFS) with Turnitin Clarity provides instructors with access to all of Turnitin's integrity insights in one place, including similarity checking, AI writing detection*, submission metadata*, and writing reports and playback. These insights empower instructors to quickly determine the originality of written work, and have constructive, trust-building conversations with students.

*Available only with Originality add-on

Actionable feedback

Instructors can deliver formative feedback quickly and easily with feedback tools available within TFS, helping students cultivate writing excellence.

To know more, please contact your Turnitin representative.



MA in TESOL

- In-person or virtual synchronous classes
- Hands-on teaching approach with practical focus
- Personalized mentoring to ensure student success

Scan



For more information,
email Dr. Hanh Nguyen
at tesol@hpu.edu